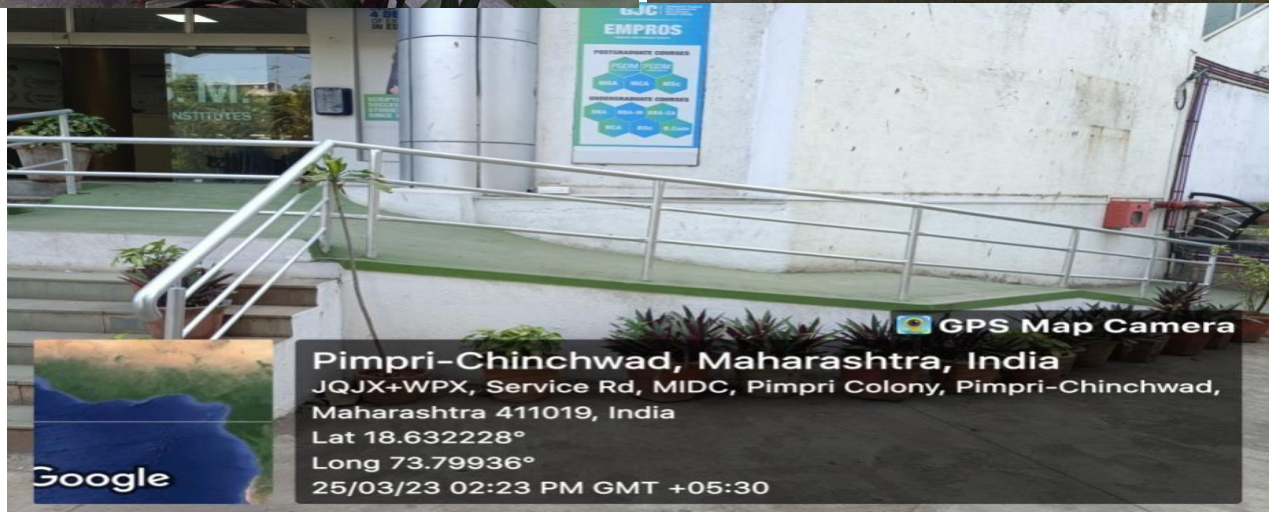
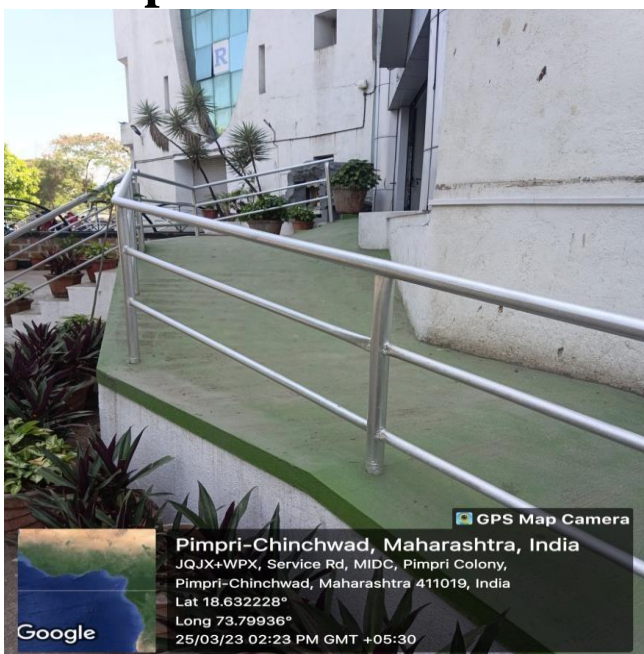


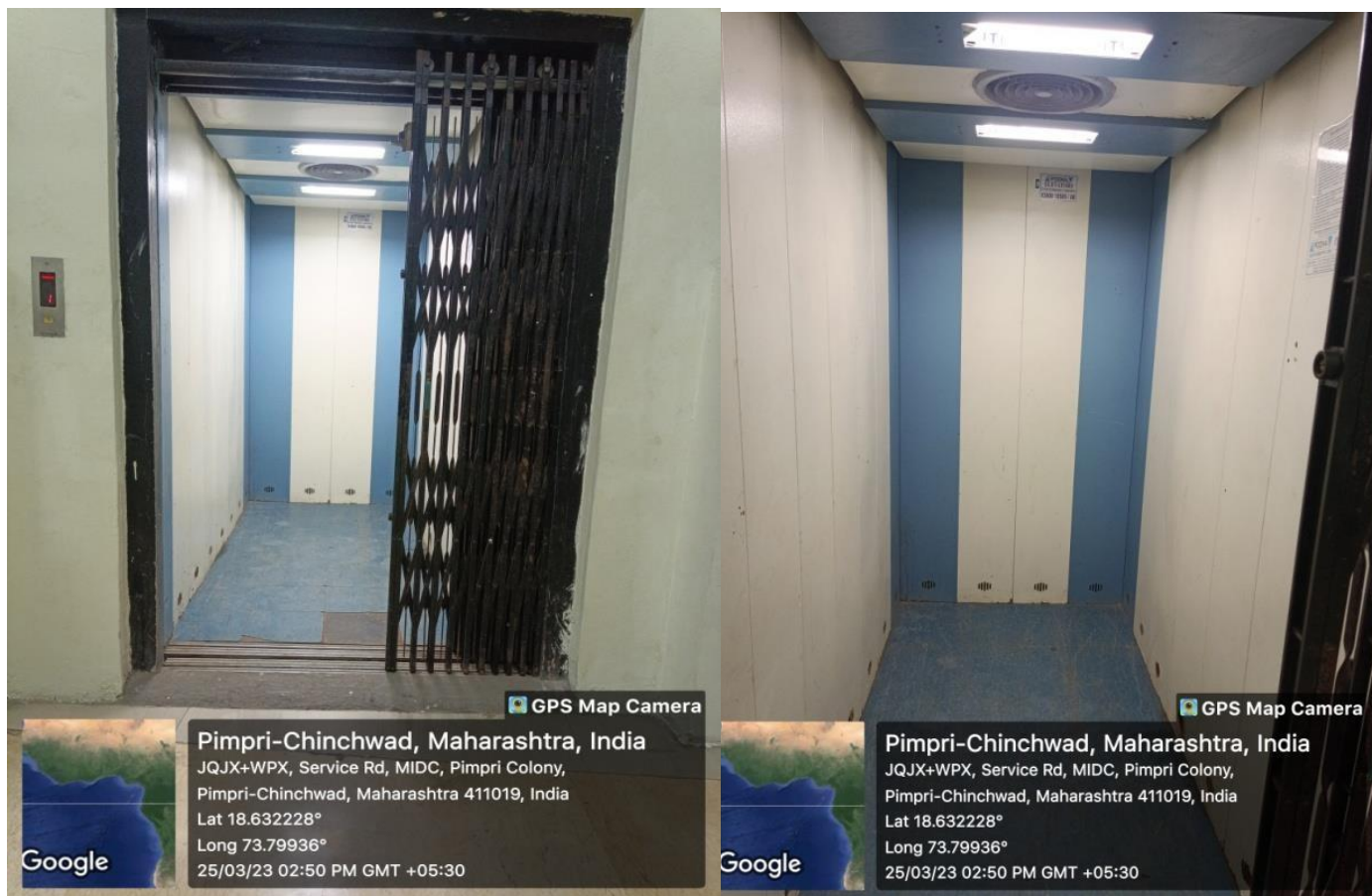
## 7.1.7. Measures for Barrier Free Environment

### A) Ramps and Rails




Director  
 ASM's IPS

## B) Passenger Lifts

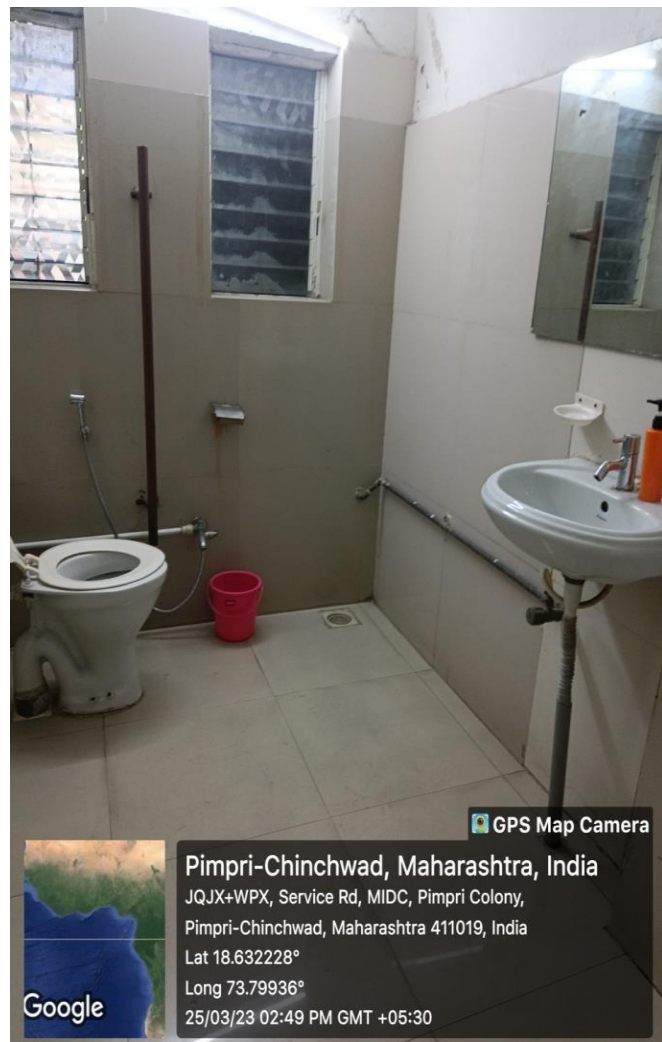


Director  
 ASM's IPS

### C) Specially designed Toilet block for Divyangan:



Director  
ASM's IPS



Director  
 ASM's IPS

**D) Wheelchair for Divyangan available at reception:**



Director  
 ASM's IPS