

TREE PLANTATION

Date: 28th October 2022

Venue: IPS Campus

Introduction:

A Tree plantation Programmed was organized by ASM's IPS to give awareness of commendable tree plantation initiative as part of their commitment to environmental sustainability and community engagement. The project aimed not only to contribute to the ecological well-being of the area but also to raise awareness about the importance of preserving our natural resources.

Objective: The objective of the program was to initiate Tree plantation awareness among students and preserving our nature.

Report: On the designated day, the students gathered at the ASM's IPS Campus with enthusiasm and a strong sense of purpose. The event commenced with a brief inauguration ceremony, where faculty members as Asst. Prof. Isha Bhate, Ma'am, Asst. Prof. Haridini Pandav Ma'am, Asst. Prof. Jyoti Gawhane, Ma'am and Snehal Ma'am and local dignitaries as Dr. Vikas Barbate Sir, Dr. Vikas Vidhate Sir were invited to address the participants and share insights on the significance of tree plantation.

The students then actively engaged in the planting process, working in groups to ensure the efficient distribution of saplings and proper planting techniques. The team also organized informative sessions on tree care, emphasizing the importance of nurturing the planted saplings to ensure their healthy growth. Successfully carried out tree plantation activities.

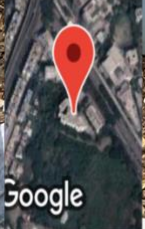
Outcomes: It was nice initiative from ASM IPS and all faculty and students felt happy and proud by performing plantation activity.

Photos:





GPS Map Camera



Pimpri-Chinchwad, Maharashtra, India
Indira Nagar, Block 'C', MIDC, Chinchwad,
Pimpri-Chinchwad, Maharashtra 411019, India
Lat 18.634367°
Long 73.799482°
28/10/22 3:15 PM GMT +05:30